



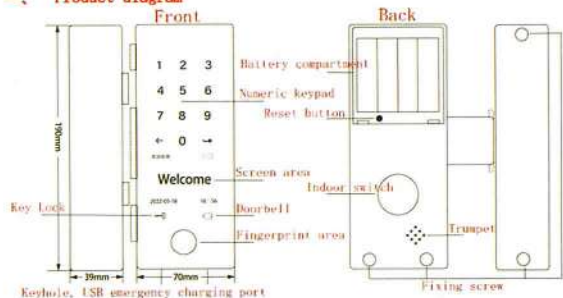
Glass lock instruction manual

Model: b113

Ver.21090902

Reminder: the smart lock mechanical key is used as an emergency unlocking method, please do not put it indoors! (Before use, please scan the code on WeChat and follow the official account of the Suoba, there are detailed installation and operation videos)

一、 Product diagram



二、 Technical parameter

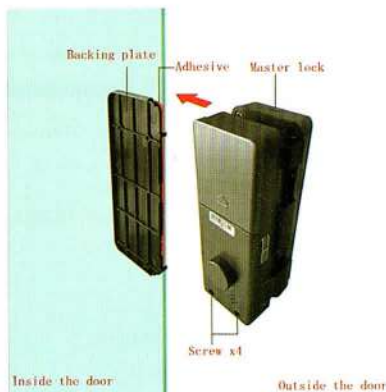
Main material	Aluminum alloy	Color	Star gray
Information capacity	500 (fingerprints: 100)	Fingerprint speed	≤0.3s
Collector	Sweden imported semiconductor fingerprint acquisition module	Static power	<80ua
Card type	M1 card, ic card	Operating temperature	-20℃~60℃
Power supply	4 aa batteries	Product weight	1.32kg
Emergency interface	Type-c interface	Applicable door thickness	8~12mm
Unlock method	Fingerprint, password, card, app, bluetooth, key, temporary password		
Applicable door	Glass doors, office doors, copper doors, wooden doors, etc.		

3. Installation guide

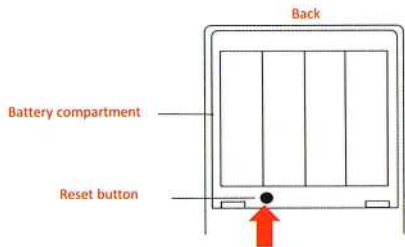
Notes before installation:

1. Before installation, please ensure that the glass door is aligned (please consult the door manufacturer for door problems), otherwise it will affect the automatic locking function.

2. For installation videos, system setting videos, etc., please enter the "Suoba" official account - operation instructions to view (There are detailed installation and operation videos in it)



- 1) First paste the adhesive ② on the smooth surface of the pad ①;
- 2) Select the appropriate height, paste the backing plate with adhesive backing on the glass inside the door, the two card positions of the backing plate are aligned with the glass edge, and the backing plate and the glass plane should be kept flat;
- 3) Main lock ③ insert the backing plate in the direction of the red arrow, open the back cover of the battery, and fasten the 4 screws on the upper and lower ends of the rear panel ④;
- 4) Install 4 aa batteries, wake up the screen, and confirm whether the direction of the number keys is correct. When the number keys are displayed in reverse, press the small button at the bottom of the battery box 3 times to adjust the number direction;



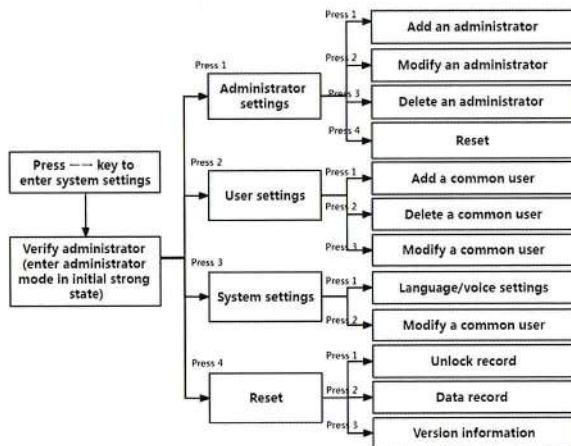
Digital commutation: 3 taps
 Reset: long press for 5 seconds
 Connect doodles: 5 taps

- 5) Method of the auxiliary lock is the same as that of the main lock, and the position is horizontally aligned with the main lock;
 6) After installation, use the initial password "123456" or "any fingerprint, card" to unlock, and test whether the function is normal.

三、 System settings

In the initial state, any fingerprint, card or password "123456" can be unlocked. After the super administrator is set, it will automatically become invalid.

I. Lock settings (with screen display)



- Offline one-time password: suitable for use without network, click one-time password, click add, get one-time password, click finish to copy the password and send it to visiting friends (one-time password is valid for 6h, and can only be used once before it expires)
- Unlimited password operations operate in the same way; (24 hours can be used multiple times)

4.

九、 Suodada (wifi version) operation and use

Search from the apple app store or android app market: "Tuya smart" or directly scan the microcode below to download and install, register as an app user with your mobile phone number, and then proceed to the next step



Scan the two microcodes to download and install the Suodada app

- (First confirm whether to turn on bluetooth) Click the lock app to enter the background page, click the "three" icon in the upper left corner to enter, select: add lock, you will enter the next page, find the bluetooth device, find the corresponding smart lock, click in, and enter the lock name. And lock password, then ok

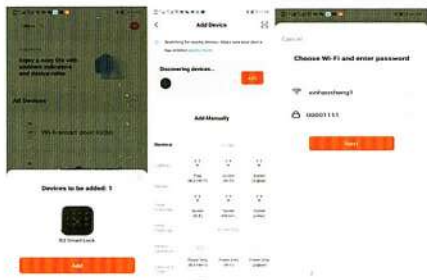
2. User management and other functions can be operated according to the voice prompts.






Scan the microcode to download and install Tuya app

1. Open the back cover of the smart lock, find the black dot below the battery compartment (that is, the reset key), use a needle-shaped object to align the reset key and press it 5 times to enter the graffiti mode (after entering the graffiti mode, the WIFI connection will appear on the lock screen display signal)
2. Turn on bluetooth, open Tuya app, click add device, the app WIFI will automatically detect that the smart lock is selected and enter the next page, enter the name and password to connect, and then the system will automatically import and click finish to enter the next step



3. Tuya app operation

①remote unlocking: touch the lock panel to wake up the keyboard, press the  logo at the bottom right of the screen to send out a remote request, and the app background receives the request signal and displays "request to open the door remotely", pull the key icon to the right to agree to complete the door.

②member management

Note: a super administrator must be added to the lock to perform the following operations .

1. App click "member management", click administrator, click add, then the page will display (please enter 5+ on the door lock first →) instructions, follow the instructions, listen to the voice to enter fingerprints, after the addition is completed, there will be a background prompt to click finish to continue.

2. Next, there are authentication methods such as fingerprint, password, door, etc., and operate according to the same method.

③temporary password

1. Unlimited password setting: click the temporary password for unlimited times when the network is in a good state, click add, and click to randomly generate a temporary password according to the prompt to set the effective and invalid time. Visitors can unlock the lock with the temporary password within the set time. Unlimited times.

2. Offline one-time password: suitable for use without network, click one-time password, click add, get one-time password, click finish to copy the password and send it to visiting friends (one-time password is valid for 6h, and can only be used once before it expires)

3. Unlimited password operations operate in the same way; (24 hours can be used multiple times)

4.

九、Suodada (wifi version) operation and use

Search from the apple app store or android app market: "Tuya smart" or directly scan the microcode below to download and install, register as an app user with your mobile phone number, and then proceed to the next step



Scan the two microcodes to download and install the Suodada app

1. (First confirm whether to turn on bluetooth) Click the lock app to enter the background page, click the "three" icon in the upper left corner to enter, select: add lock, you will enter the next page, find the bluetooth device, find the corresponding smart lock, click in, and enter the lock name. And lock password, then ok

2. User management and other functions can be operated according to the voice prompts.

